



Glass Splashback Brochure



National Call Centre
010 140 4900

Namibia
+264 83 331 8110

Botswana
+267 318 8799

Zambia
+260 211 350020

www.parrot.co.za



GLASS SPLASHBACK SPECIFICATION

GLASS TYPES

Clear (Standard Glass)- although clear to look through, it has an inherent greenish tinge due to the iron content in the glass which can alter the colour when applying a colour-backed finish. This is particularly obvious when using lighter colours such as white as it can make it appear green.

Opti Clear (Low Iron) - an ultra-clear glass which is better for achieving a truer colour representation when applying a colour-backed finish. White for example will look white rather than a greenish tinge often seen when using white on Clear glass.

Important: All clear glass has an inherent green tint. Low Iron glass is recommended where a truer colour representation is desired. However it must be advised that although a higher clarity than Clear glass, Low Iron glass also contains a slight green, blue or yellow tinge and variations may occur as each batch load of glass varies

**** Pricing:** Opti Clear (Low Iron) glass is approximately 44 % more expensive than standard clear glass.

**** Thickness:** 6mm This Opti Clear glass is used on all Parrot Display glass splashbacks

DIGITAL PRINTING ONTO GLASS

Full colour and High Resolution images, photographs, logos, to name a few, can be printed directly onto the glass surface producing a superior permanent finish. The print is printed on the reverse side(back) of the glass. Once the splashback is fitted it will not scratch, fade or discolour

Your own artwork can be supplied. Please contact us for more information

MAXIMUM GLASS PANEL SIZES

• Maximum glass sheet sizing which can be printed - 3050 x 1800mm (Clear and Low Iron)

* Please keep in mind the access of getting a panel of glass that large into the home or building, please consider access restrictions such as tight corners, lifts or stairs etc.

WHEN ARTWORK IS REQUIRED

We offer an in-house design service to cater for all your artwork requirements big or small. This can be quoted on application, once we determine the design recreation to achieve the required complete artwork/image.

Note: If a drawing/image is supplied and cannot be sent to print because of format and/or quality, a drawing fee will apply. This is a standard fee and will be charged accordingly.

MANUFACTURING PROCESS

- Precise measurements are taken on site, colour and glass type is confirmed.
- Glass is cut to size and processed (eg. cut-outs for power points, etc.)
- Glass is toughened (once the glass has been toughened it cannot be further processed, so it's imperative that it is measured and cut correctly).
- Glass is cleaned and prepared for printing.
- Glass is loaded for printing and the digital high resolution image is printed directly onto the glass surface.

* Note : Due to the nature of glass, a 15 day lead time from final measurement and payment is required. If there should be any unforeseen problems that arise during manufacture/installation lead times will be adjusted accordingly

CUT-OUTS

Standard cut-out examples, plug points, plumbing holes, corner cut outs, etc., are not charged for. Technical or special cuts/cut-outs listed below will incur additional costs - these can only be calculated once a drawing is submitted for quoting

1. Long curves
2. Diameter holes larger than 50mm
3. Corner cut outs larger than 250 x 250mm

NB: No cut outs that are larger than 50% in length, of either the length or width of the glass will be allowed as this will create a structural weakness in the glass.

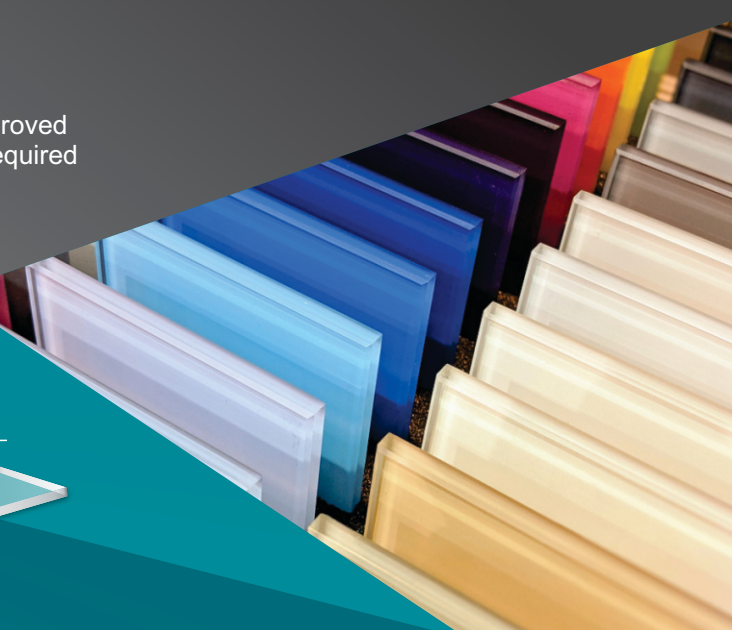
LEAD-TIMES

A minimum of 15 working days from the date of final measurement and payment is required. If there should be any unforeseen problems that arise during manufacture / installation the lead time will be adjusted accordingly

FEATURES & BENEFITS

- Our glass is manufactured to SABS standards and is SABS approved
- Low maintenance and easy to clean, especially as no grout is required
- Heat resistant and suitable for use with gas cooking appliances
- Printing will not crack, discolour or fade
- Hygienic and non-porous.
- 6mm Opti clear glass is used on all Parrot Display Splashbacks

GLASS TYPE



FIT FOR PURPOSE BEHIND STOVES

The Splashback panels can be used behind counter top hobs, both electrical and gas powered.

PRODUCT WARRANTY

A 2 year warranty will apply when the glass splashback is installed correctly, using the correct glue and process. This warranty only applies for Factory Fault glass or print.

Our splashbacks are not suitable for external glazing where the outdoor elements can contaminate the printed surface

CLEANING & MAINTENANCE

Our splashbacks can be cleaned with a cloth and warm soapy water. For stubborn dirt a mild detergent and non abrasive cloth can be used

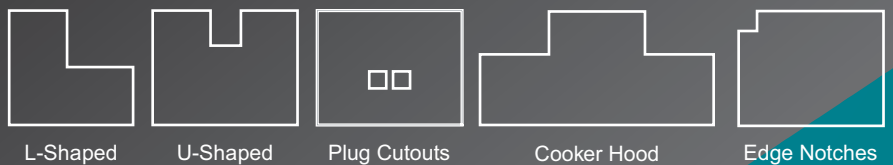
GLUING

Parrot Products Splashbacks must be glued to the surface using solvent-free water based glues. Glues that have been tested and recommended are Evo-Stick - Sticks Like Sh*t and Den- Braven High Tack. These glues are recommended above all other glues. Parrot Products cannot be held liable if the incorrect glue is used or the manufacturers formula changes.

KITCHEN SPLASHBACK



COMMON CUT SHAPES



APPLICATIONS

- Wall Cladding
- Shower Cladding
- Vanity Splashbacks
- Tables
- Kitchen splashbacks
- Cabinet Doors
- Glass Writing Boards

Image Orientation



PORTRAIT ❌



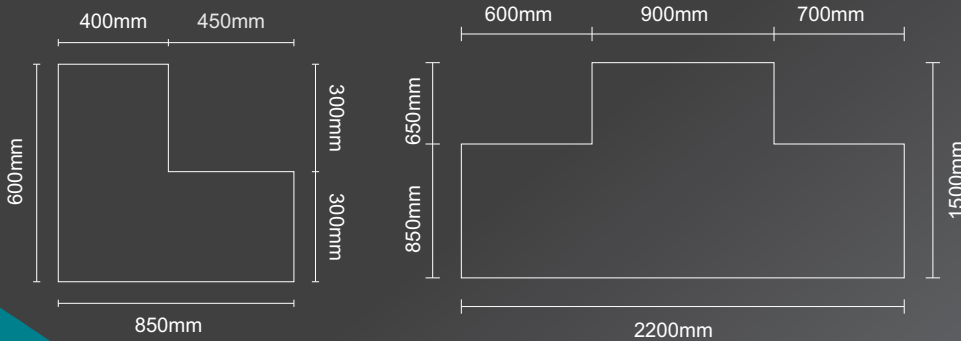
LANDSCAPE ✅

Splashbacks are typically long and thin. Ensure you select an image with a similar height and width ratio to that of your splashback size.



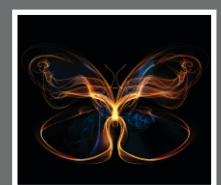
Measuring for a splashback

For quotation purposes a basic drawing is required with the over all dimensions, two examples are shown below



** Once a quote is accepted Parrot Products will complete accurate measurements using laser levels and measurers.

These measurements are used to create the CAD drawings that will be used to cut the glass







Standard Colour Range

Metallic Colours will incur an additional cost **

 Black	 White	 Yellow - 3LNCSP	 Red - 146NC	 Royal Blue - 39NC
 Green - R6032	 Lime - R6018	 Burgundy - R8015	 Orange - R2003	 Egg Shell - N1223
 Cool Grey - R7040	 Warm Grey - N106	 Mid Grey - N104	 Ocean - 19NC2	 Blue - R5012
 Rose - N889	 Bubble Gum - 45NC/1	 Charcoal - R7015	 Ivory Satin - N286	 Army Brown - N712
 Turquoise - N1177	 Lavender Purple - 48NC/1	 Clay - R8023	 ** Metallic Silver	 ** Metallic Black

Lead Time : 15 working days from date of final measurement.

Should there be any unforeseen problems that arise during manufacture / installation, lead time will be adjusted accordingly.

Orders will not be placed until all the relevant documentation has been received

Colours can vary when printed on glass due to their refractory properties as well as the pureness of the clear glass.